



# Installing Castella

A short installation guide for setting up castella on your computer

Drs. Mira van Houten

Copyright © 2005 A.E.T. Europe B.V.

28 July 2005

Revision History

Revision 1.0

28 July 2005

Initial Release

## Table of Contents

1. Installing Castella .....	1
2. Configuring Mozilla, Firefox or Netscape .....	2
3. Removing Castella .....	3

## 1. Installing Castella

### 1.1. Welcome to Setup

Please exit all Windows programs before running setup.

To install Castella, double-click the setup file.



Figure 1: Welcome to the Setup Wizard

Click *Next* to continue

### 1.2. Exit Setup

Please note that at every stage of the installation process, you can halt / stop the installation.

In order to do so, click *Cancel*. A dialog box will be displayed, asking to confirm cancelling the setup. This dialog box also enables you to resume Setup or to exit definitely.

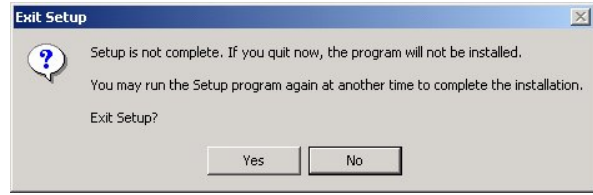


Figure 2: Exit Setup

Click *Yes* to cancel and quit the setup. Click *No* to continue the Setup program.

### 1.3. Ready to Install

Upon clicking *Next* in the Welcome to the Castella Setup Wizard window, setup will be ready to begin the installation of Castella on your computer:

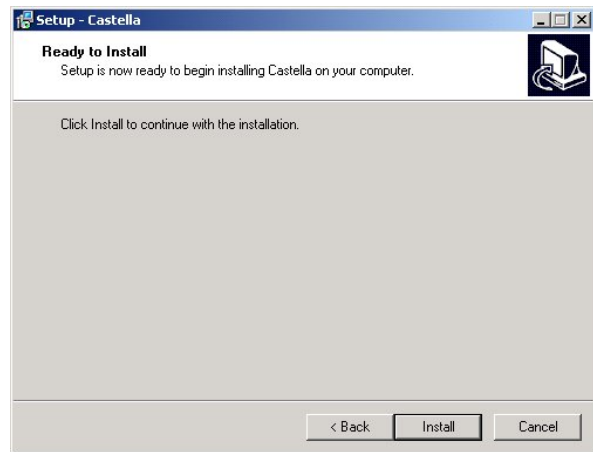


Figure 3: Ready to install

At every step of the installation, you may return to the previous window by clicking *Back*

### 1.4. Installing

Castella will now be installed:

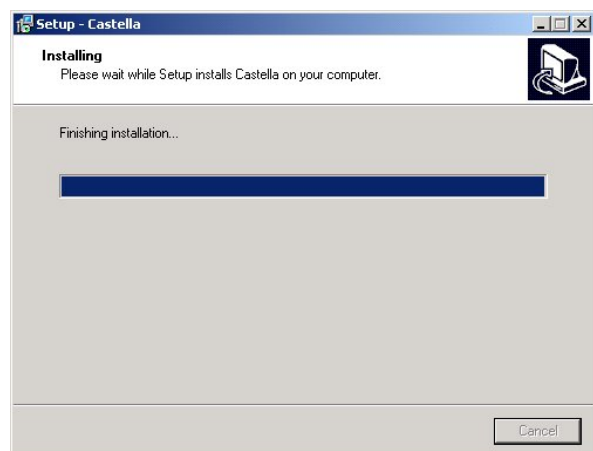


Figure 4: Installing



Wait until the installation is finished.

### 1.5. Completing

When setup has finished installing Castella on your computer, you should reboot the computer to complete the installation of Castella:

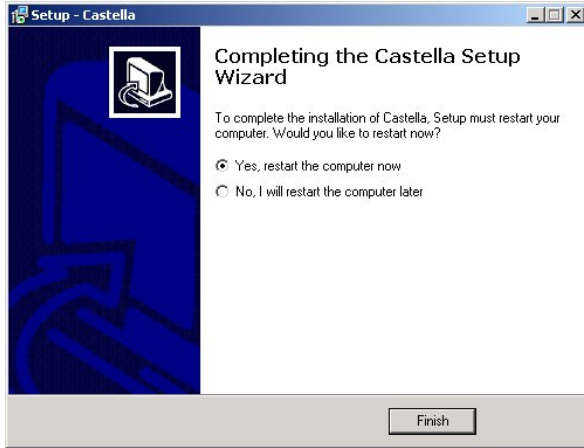


Figure 5: Completing

Click *Finish* to restart the computer now.

### 1.6. Verify Installation

To verify that Castella is correctly installed, go to *Start > Settings > Control Panel > Administrative Tools > Services* and check that Castella is in the list and started, as shown below:

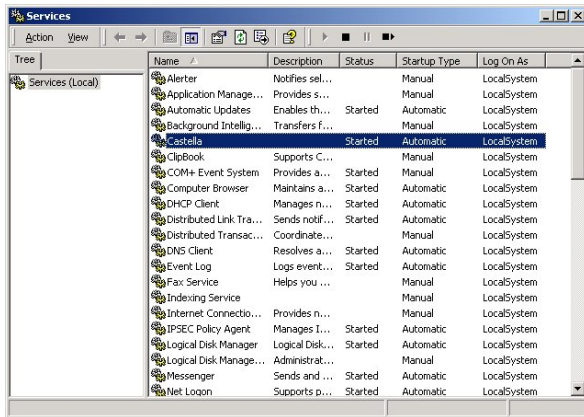


Figure 6: Services

## 2. Configuring Mozilla, Firefox or Netscape

### 2.1. Installation in Netscape or Mozilla

When (first) installing SafeSign on the machine where Castella is installed, the SafeSign InstallShield Wizard will allow you to install SafeSign in Netscape and/or Mozilla during the SafeSign installation procedure (if

Netscape / Mozilla are installed at the time of Safe-Sign installation and if selected).

It is recommended that the SafeSign PKCS #11 Library (aetpkssl.dll) is not installed at this point. After installing Castella, users should manually add the Castella Library (libcastella.dll) to Netscape / Mozilla. The next pages contain instructions to do so.

The same applies to other PKCS #11 applications, where you should indicate the PKCS #11 Library to use.

### 2.2. Opening the Device Manager

In Mozilla Navigator or Netscape Navigator (7.1), go to *Edit > Preferences > Privacy & Security > Certificates > Manage Security Devices* to open the Device Manager dialog:

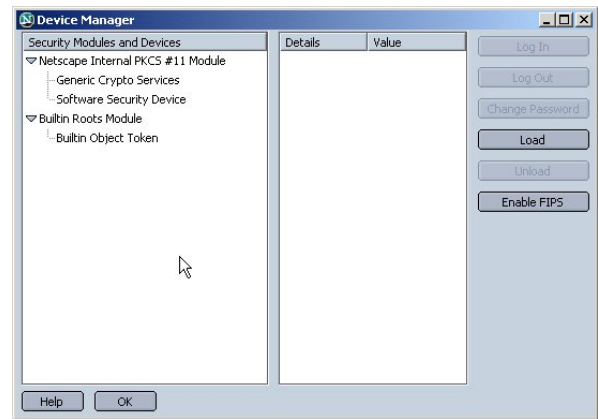


Figure 7: Netscape

### 2.3. Load PKCS#11 Device

Click on Load to load a new PKCS#11 device.

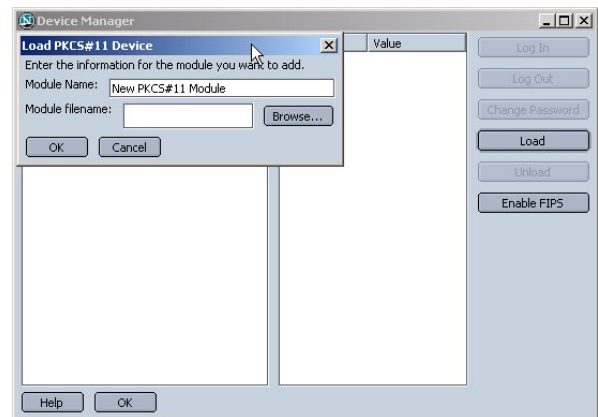


Figure 8: Netscape Device Manager

### 2.4. Enter a Module Name

Enter a module name ("Castella" in our example) and the module filename (as indicated below):



Figure 9: Load PKCS#11 Device

Click *OK*

### 2.5. Confirm Module Installation

Upon clicking OK, you will be asked to confirm installation of the security module:

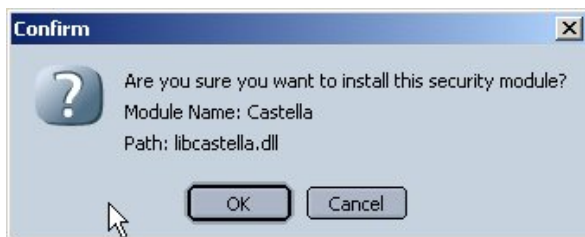


Figure 10: Load PKCS#11 Device

Click *OK* to confirm installation of the security module

### 2.6. Module Installation Confirmed

Upon clicking OK, you will be informed when the security has been installed:

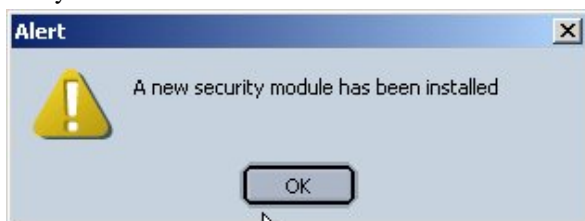


Figure 11: Load PKCS#11 Device

Click *OK* to finish installation

### 2.7. Installation Complete

The Castella security module has now been installed:

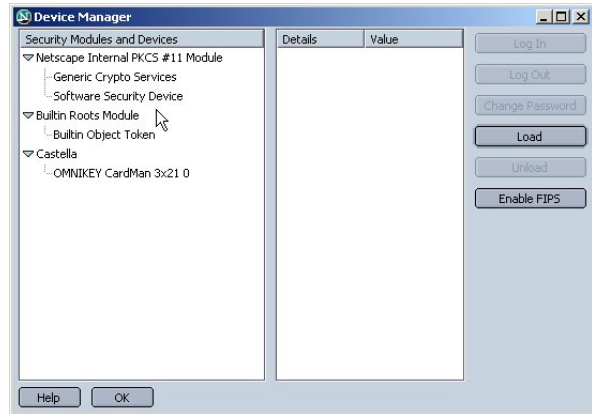


Figure 12: Netscape Device Manager

Close this dialog

## 3. Removing Castella

### 3.1. De-Installation

In order to de-install Castella, we recommend using the Add/Remove Programs windows:

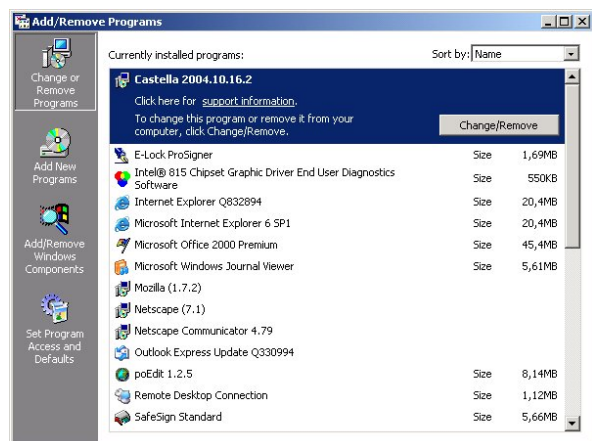


Figure 13: Add/Remove Programs: Castella

Click Change/Remove

### 3.2. Confirm De-Install

Upon clicking Change/Remove, you will be asked if you are sure to de-install Castella:

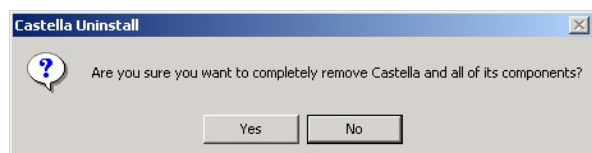


Figure 14: Castella Uninstall

Click Yes to continue removing Castella and all of its components. Upon clicking yes, Castella will be uninstalled:



### 3.3. De-Install Progress

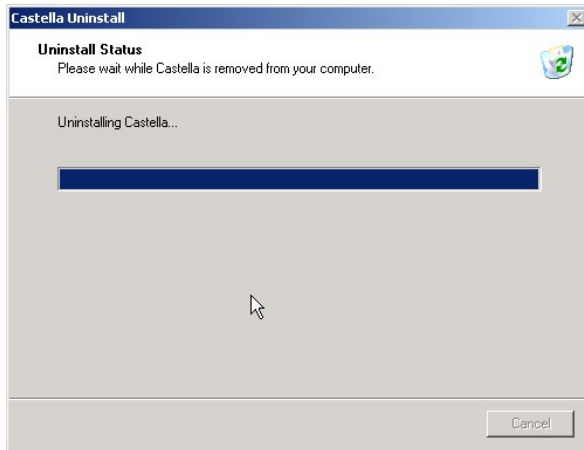


Figure 15: Castella Uninstall: Uninstall Status

### 3.4. De-Install Complete

Wait until the Castella is uninstalled. When Castella is uninstalled, you will be asked to restart your computer:



Figure 16: Castella Uninstall: Restart

Click Yes to restart your computer